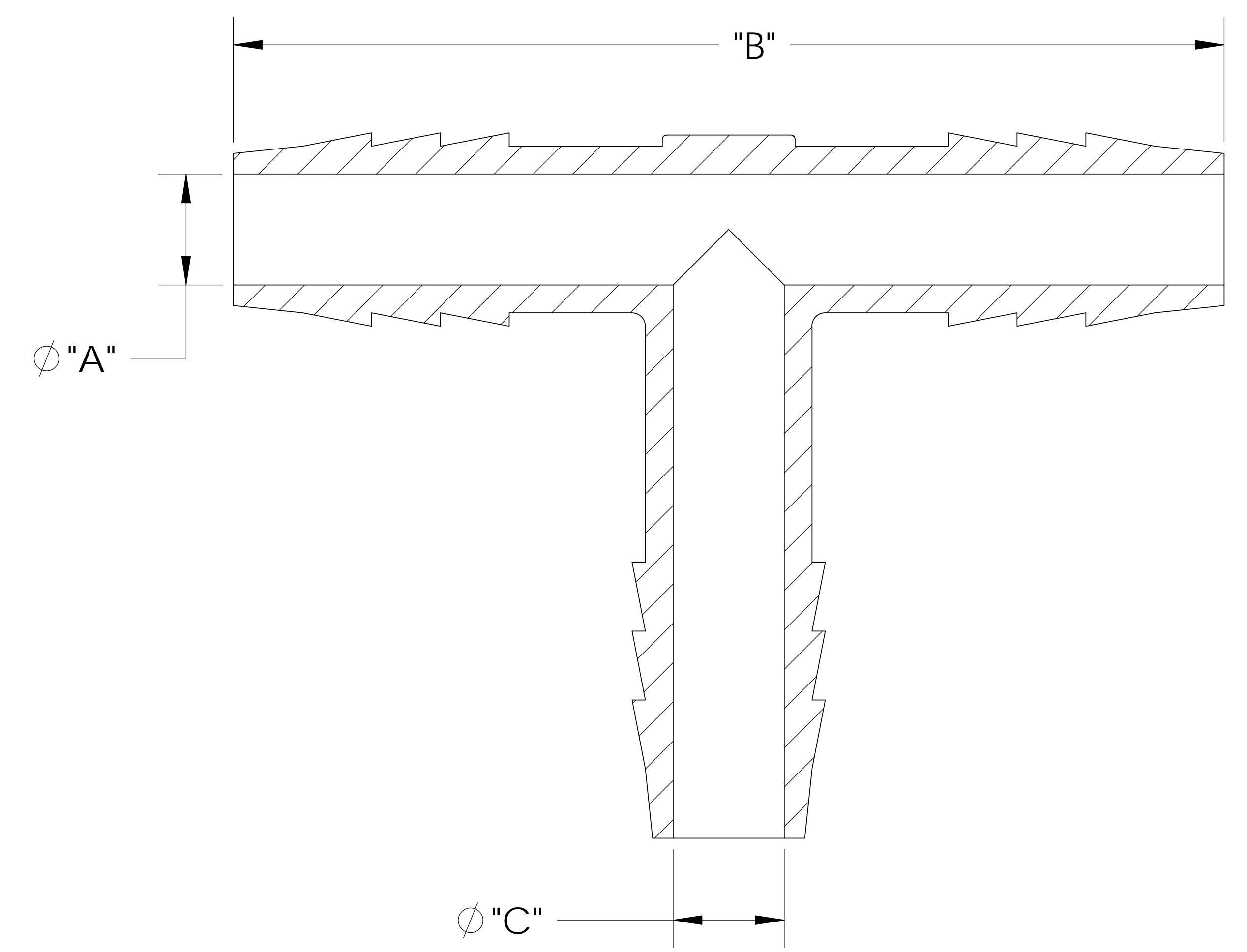
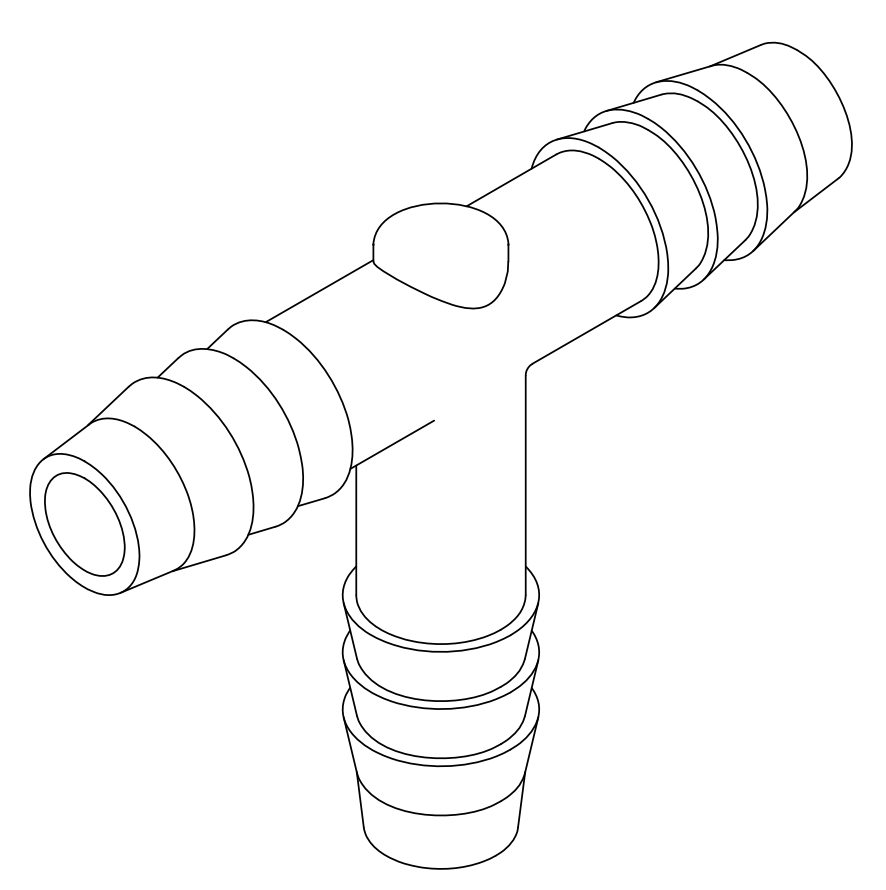
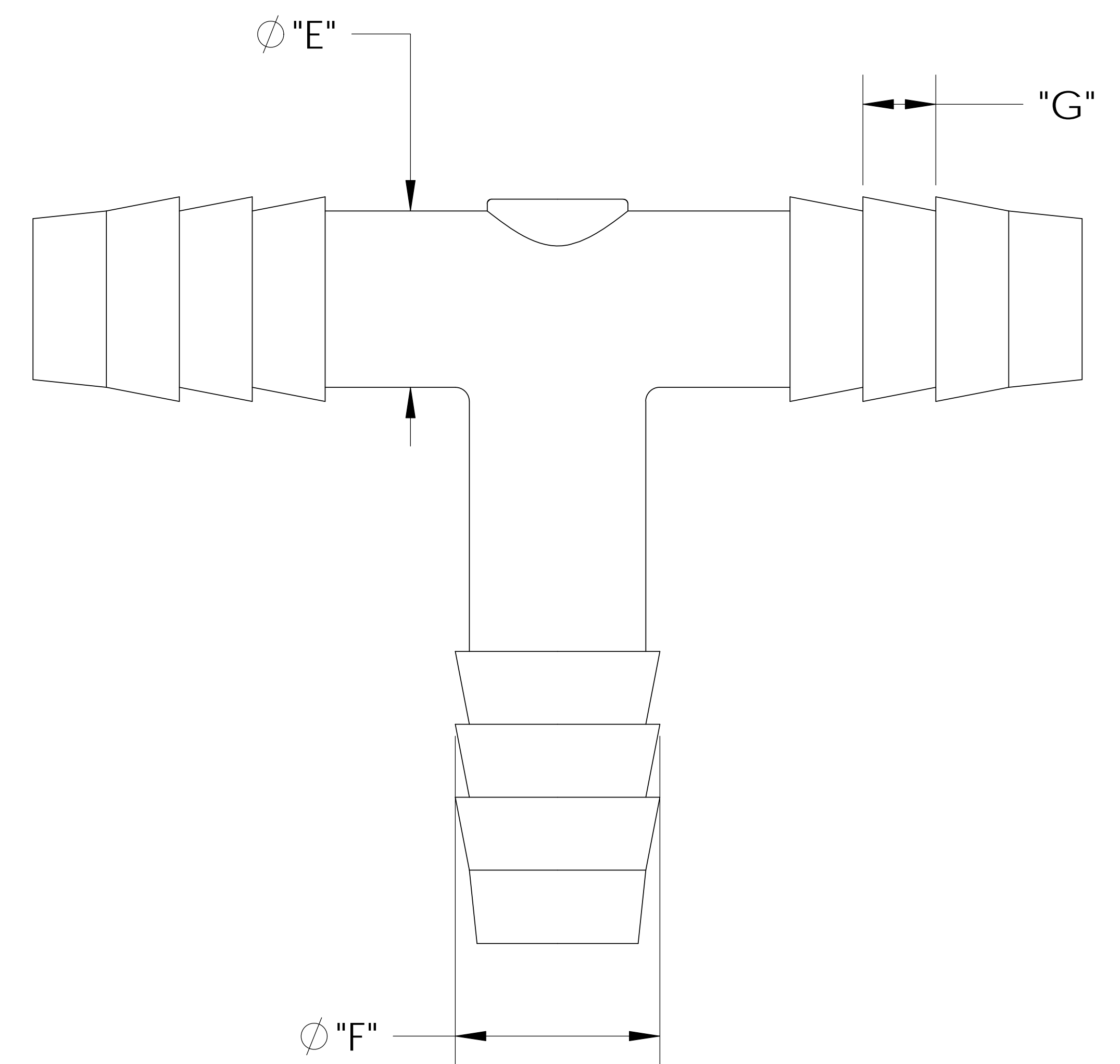
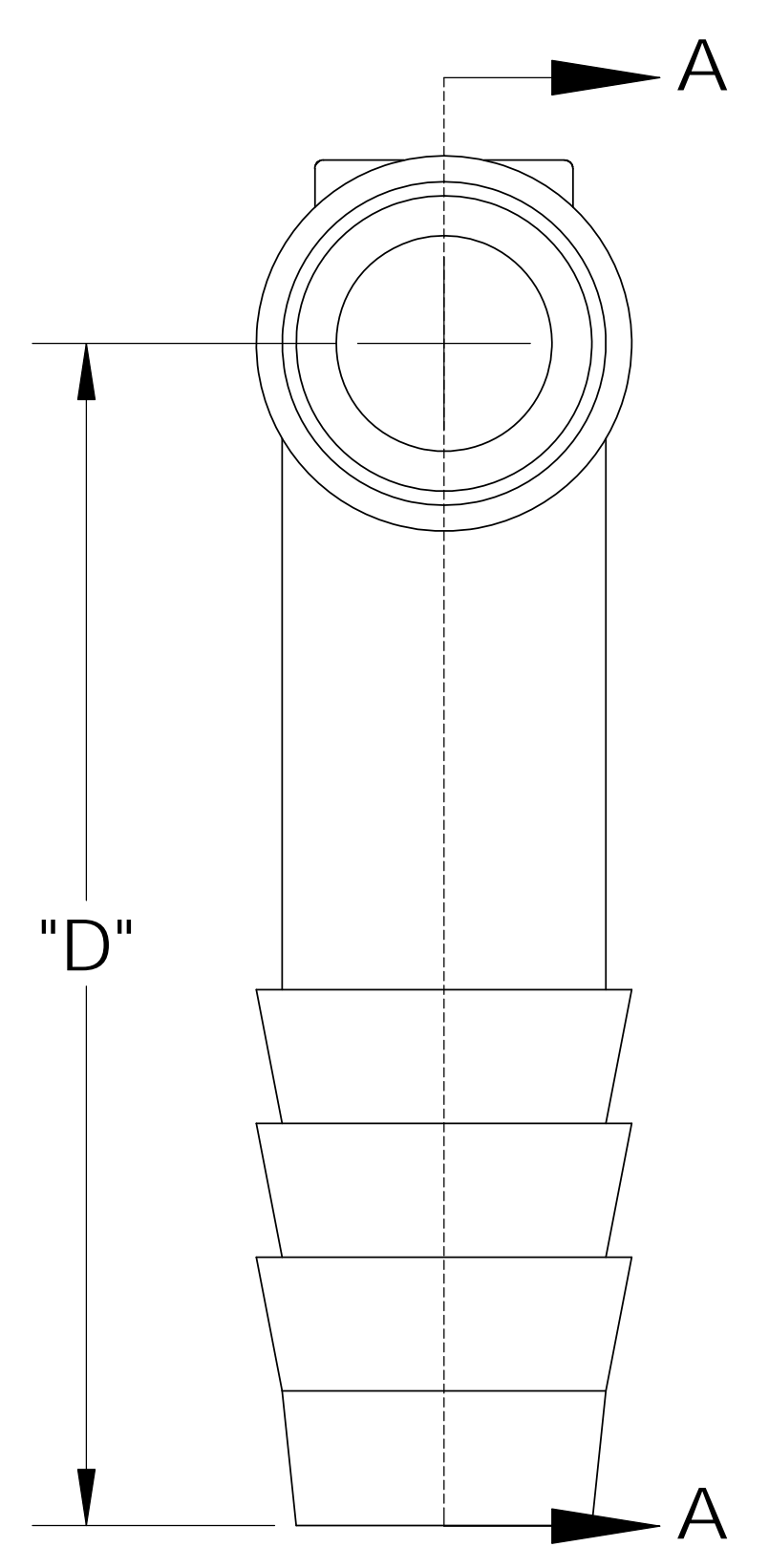


UNCONTROLLED IF PRINTED; CONTROLLED COPY LOCATED IN IQMS DOCUMENT CONTROL



SECTION A-A



CATALOG NO.	DESCRIPTION	MATERIAL	DIM "A"	DIM "B"	DIM "C"	DIM "D"	DIM "E"	DIM "F"	DIM "G"
TT9666/PP	3/8 X 3/8 X 3/8 PP	POLYPROPYLENE	.245	2.21	.245	1.18	.370	.430	.155
TT9666/P	3/8 X 3/8 X 3/8 P	POLYETHYLENE	.245	2.16	.245	1.14	.375	.430	.145
TT9666/K	3/8 X 3/8 X 3/8 K	KYNAR	.245	2.21	.245	1.18	.370	.430	.155
TT9666/N	3/8 X 3/8 X 3/8 N	NYLON	.250	2.23	.250	1.18	.375	.435	.155

SHOWN

REV	WRO#	DESCRIPTION
F	95.00053	CONVERTED TO 3D FORMAT

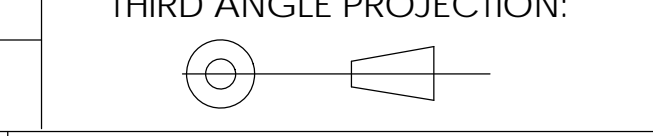
UNLESS OTHERWISE SPECIFIED:
 DIMENSIONS ARE IN INCHES
 TOLERANCES:
 ANGULAR: ±0.5°
 X.X = ± 0.1
 X.XX = ± 0.05
 X.XXX = ± 0.015
 REMOVE ALL SHARP EDGES
 AND BURRS
 BLEND ALL RADII TO 0.01IN
 INTERPRET GEOMETRIC
 TOLERANCING PER: ANSI Y 14.5 1994
 MATERIAL:
 PP, P, N
 FINISH:
 NA
 THIRD ANGLE PROJECTION:

	NAME	DATE
DRAWN	KDJ	12/20/10
CHECKED	KDJ	12/21/10
ENG APPR.	JM	12/21/10
MFG APPR.	ML	12/21/10
Q.A.	NJW	12/21/2010

Thogus You think it, we can make it.
 33490 PIN OAK, AVON LAKE, OH 44012
TITLE:
 3/8 BARB X 3/8 BARB X 3/8
 BARB TEE
 SIZE **B** DWG. NO. **TT9666** REV **F**
 SCALE: 2:1 MASS: SHEET 1 OF 1

NOTES:
 1) POLYPROPYLENE HAS COLOR OPTIONS:
 BLACK = TT9666/PPB
 NATURAL = TT9666/PPN

PROPRIETARY AND CONFIDENTIAL
 THE INFORMATION CONTAINED IN THIS
 DRAWING IS THE SOLE PROPERTY OF
 THOGUS PRODUCTS COMPANY. ANY
 REPRODUCTION IN PART OR AS A WHOLE
 WITHOUT THE WRITTEN PERMISSION OF
 THOGUS PRODUCTS COMPANY IS
 PROHIBITED.



DO NOT SCALE DRAWING